



# MULTI-FAMILY DIVISION

**FOURPLEX PLAN**  
**2 STORY**



**ARTIST RENDERING OF THE HENDERSON TOWNHOUSE**

## HENDERSON

The Henderson as shown features a tower projection with a dormer above it and front door with double sidelights as a standard feature. Optional features include the high pitched roof with eyebrow dormers over the window in bedroom #1, window grills, mantels, shutters and wide cornerposts. The porch, metal roof and stonework are site supplied and installed.

## HENDERSON I TOWNHOUSE

27'-6" / 28'-6" X 64'-0"

794 SQ. FT.  
per dwelling

2 BR - 1 BATH

DESIGNED FOR FULL BASEMENT OR CRAWL SPACE FOUNDATION

**SIMPLEX INDUSTRIES INC.**

KEYSER VALLEY INDUSTRIAL PARK

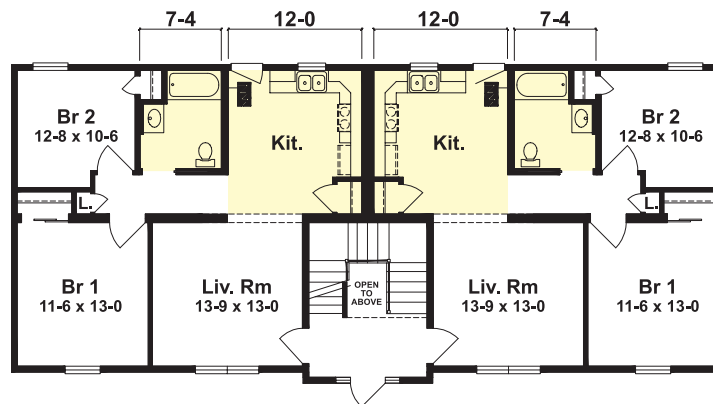
1 SIMPLEX DRIVE

SCRANTON, PA 18504

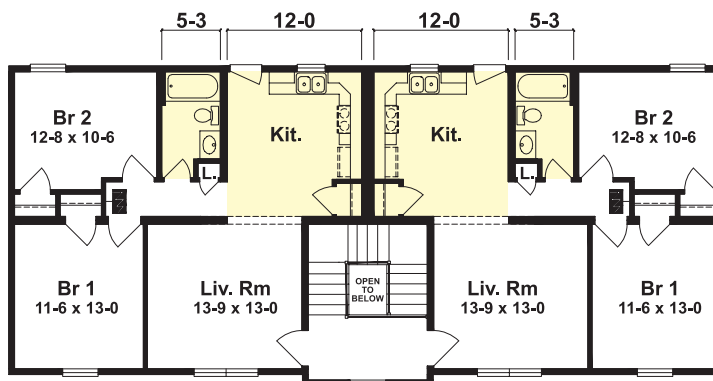
(570) 346.5113

www.simplexhomes.com

## HENDERSON I



**FIRST FLOOR**

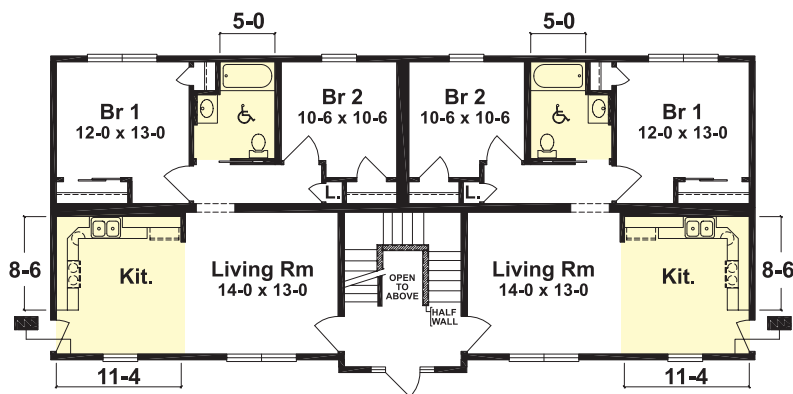


**SECOND FLOOR**

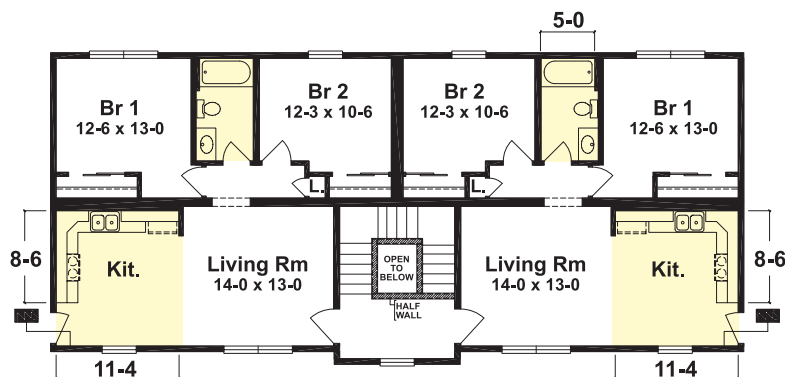
PLEASE SEE THE REVERSE SIDE OF THIS SHEET FOR ADDITIONAL INFORMATION AND HOME PLANS.



**HENDERSON II**

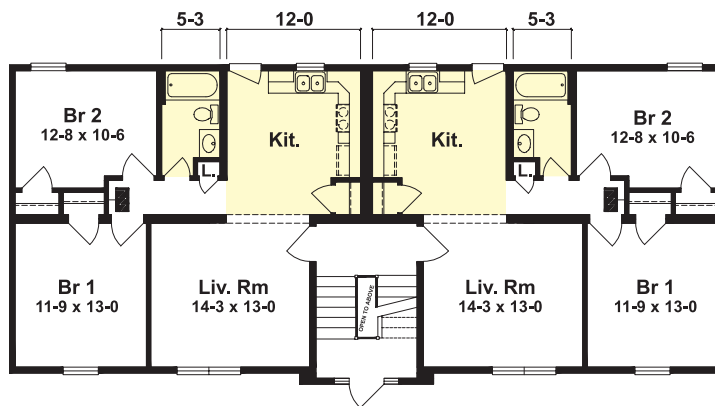


**FIRST FLOOR**

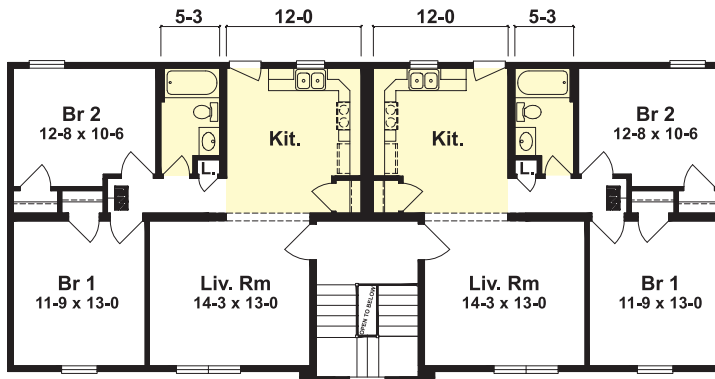


**SECOND FLOOR**

**HENDERSON III**



**FIRST FLOOR**



**SECOND FLOOR**

= linoleum areas

**HENDERSON II  
TOWNHOUSE**

**27'-6" / 28'-6" X 64'-0"**

**794 SQ. FT.**  
per dwelling

**2 BR - 1 BATH**

**HENDERSON III  
TOWNHOUSE**

**27'-6" / 28'-6" X 64'-0"**

**806 SQ. FT.**  
per dwelling

**2 BR - 1 BATH**

**DESIGNED FOR FULL  
BASEMENT OR CRAWL  
SPACE FOUNDATION**

**SIMPLEX INDUSTRIES INC.**

KEYSER VALLEY INDUSTRIAL PARK

1 SIMPLEX DRIVE

SCRANTON, PA 18504

(570) 346.5113

www.simplexhomes.com

**"Building Homes With You In Mind"**

Artist renderings depict typical finished homes and generally include some optional exterior features. Standard specifications and pricing available on request. Specifications may be subject to revision as required by use and location.



# MULTI-FAMILY DIVISION

**FOURPLEX PLAN**  
**2 STORY**



ARTIST RENDERING OF THE HILLCREST FOURPLEX

## THE HILLCREST

The Hillcrest elevation as pictured includes an optional high pitched roof, decorative vent, shakes, trim boards, optional siding, wide corner posts, window grills and mantels.  
The porch and roof are site installed and provided.

## THE HILLCREST FOURPLEX

30'-6" X 62'-0" / 63'-0"

First Floor/Left Side Plan  
**858 SQ. FT.**

First Floor/Right Side Plan  
**862 SQ. FT.**

Second Floor/Left Side Plan  
**865 SQ. FT.**

Second Floor/Right Side Plan  
**876 SQ. FT.**

**2 BR - 1 BATH**

**SIMPLEX INDUSTRIES INC.**

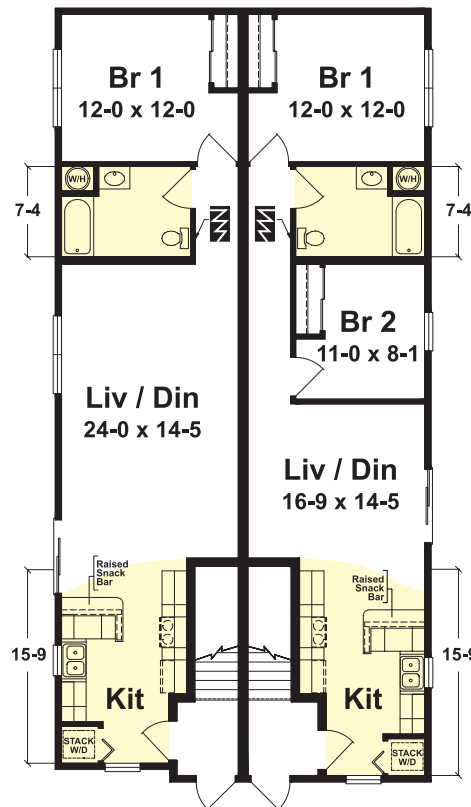
KEYSER VALLEY INDUSTRIAL PARK

1 SIMPLEX DRIVE

SCRANTON, PA 18504

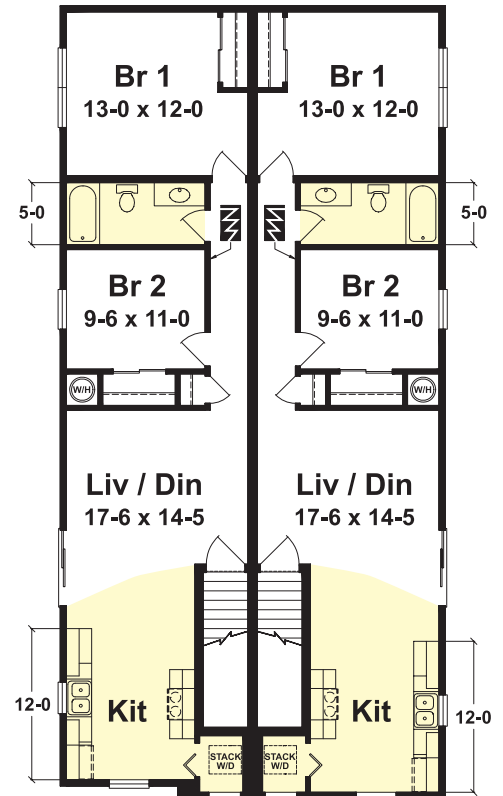
(570) 346.5113

www.simplexhomes.com



Optional 1 Bedroom plan

## FIRST FLOOR



## SECOND FLOOR

= linoleum areas

PLEASE SEE THE REVERSE SIDE OF THIS SHEET FOR ADDITIONAL INFORMATION AND HOME PLANS.



# MULTI-FAMILY DIVISION

**FOURPLEX PLAN**  
**2 STORY**



ARTIST RENDERING OF THE HOLLISTER

## THE HOLLISTER

The Hollister as shown comes with a tower projection and dormer at the front entry as a standard feature. Optional features include the high pitched roof, gable end eave returns, vertical and shake siding with wide cornerposts, decorative trim boards, window grills, mantels, shutters, lineals and korbels. The porch and roof are site supplied and installed. The front door and sidelight style are also optional.

## THE HOLLISTER TOWNHOUSE

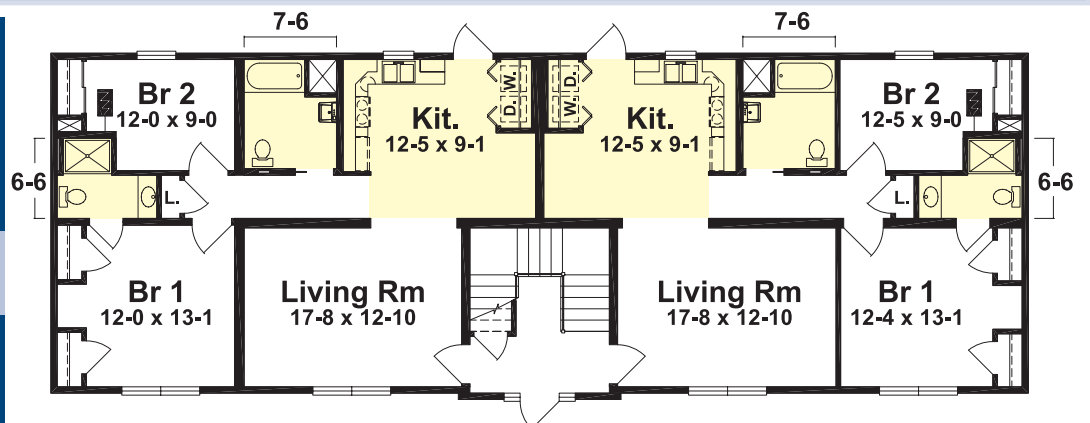
27'-6" x 79'-3"

1012 SQ. FT.  
per dwelling

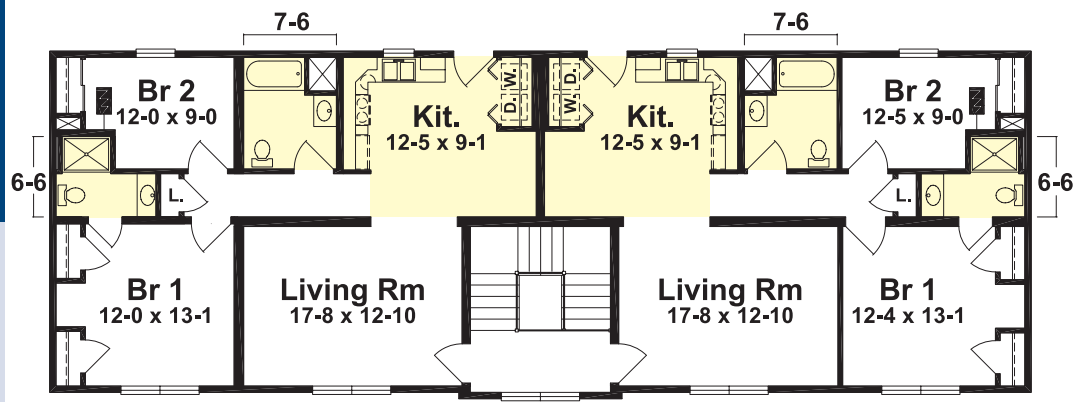
2 BR - 2 BATHS

DESIGNED FOR FULL BASEMENT OR CRAWL SPACE FOUNDATION

**SIMPLEX INDUSTRIES INC.**  
KEYSER VALLEY INDUSTRIAL PARK  
1 SIMPLEX DRIVE  
SCRANTON, PA 18504  
(570) 346.5113  
www.simplexhomes.com



FIRST FLOOR



SECOND FLOOR

= linoleum areas

**"Building Homes With You In Mind"**

Artist renderings depict typical finished homes and generally include some optional exterior features. Standard specifications and pricing available on request. Specifications may be subject to revision as required by use and location.